



Product Catalog



Remar
Technologies Group

RemarTG.com | 615-965-4410

Patient Satisfaction is Our Focus

RTG offers a comprehensive solution to integrating patient experience with hospital grade technology. Clients can depend on RTG to provide reliable and responsive service from start to finish.

Everything we do revolves around the patient's experience in the healthcare facility from the moment they walk in the door to the moment they leave.

From the digital signage they see directing them to check in, to a clear crisp picture on a TV, to the interactive content they experience, we strive every day to make sure our client's patients are able to have the comforts of their own home in your facility.

We are not going to stop there; our commitment to you is to continue to enhance the patient experience by developing groundbreaking technology and innovative products.

Table of Contents

INTERNET PROTOCOL TELEVISION SYSTEMS (IPTV)	4
Television Distribution System	4
Digital Signage	6
Patient Engagement & Education	8
Entertainment	10
DIRECTV	12
TELEVISIONS & EQUIPMENT	14
Hospital Grade TVs	14
Commercial TVs	18
Arms	20
Mounts	22
Accessories	24
Digital Headends	30
DIGITAL SIGNAGE & MONITORS	32
Monitors	32
Wayfinding	34
Video Walls	36
SITE CONSULTATION, INSTALLATION & SERVICE	38



The LEIGHTRONIX ipMerge™ IPTV solution is an extremely versatile and affordable all-in-one interactive television system. With full-featured models that support as many as 3000 endpoints (Smart IPTV displays and/or set-top boxes), the LEIGHTRONIX ipMerge is highly scalable from small installations to large within a single system. The ipMerge includes management middleware with a customizable graphical user interface, a multichannel video-on-demand server, and a multichannel multicast server within a one rack unit platform. Thanks to the system's advanced graphic capabilities, making your IPTV system your own is easy, with expansive overlays, branding, and graphical slide options.

IPTV Solutions Benefits



IPTV Features

Digital Signage Channels

Dedicated 24/7 digital signage channels inform and educate visitors and employees with the messages you want to deliver

Integrated Video-on-Demand Server

Whether for training or entertainment, the included VOD feature empowers users to watch your selection of videos at their convenience

Integrated Multicast Server

A powerful, file-based server that enables users to display slides and video programming on multiple dedicated channels for 24/7 viewing

Total Alert System (TAS)

Supplement your existing safety systems or manually activate alert overlays, videos, and other notifications

Endpoint Granularity

Control endpoint notifications, channel access rights, and other customization for any single endpoint, group of endpoints, or all endpoints on a system

Endless Variety of Channels

Incorporate additional content into your channel lineup with ease: local and national weather, metro traffic conditions, data feeds, and so much more!



Digital Signage

Digital signage is everywhere, and IPTV makes integration of digital signage into your facility a seamless process. Our system supports video file-based digital signage and image-based digital signage modes of operation. All your digital signage can be easily managed from the cloud or from one centralized location.

Digital Signage

Standard Digital Signage

Essential digital signage is easily accomplished by leveraging the LEIGHTRONIX ipMerge IPTV controller's channel playlist playback or channel scheduled playback functionality. Once set up for playback, multiple files are played out as a channel by the ipMerge IPTV controller. Using the channel bundle and endpoint grouping feature, endpoint screens are dynamically configured to present only the channel(s) appropriate to the area, with granularity down to a single endpoint. Digital signage channels can be blocked or included in any channel bundle.

Enhanced Digital Signage

LEIGHTRONIX offers the NNA-5000e digital signage controller for users that need enhanced digital signage capability. The NNA-5000e is a rackmount device (1RU) that provides a single, high-quality digital signage stream output. Anywhere from one to dozens of LEIGHTRONIX NNA-5000e digital signage sources can be easily managed over the cloud or at a centralized location. Video, images, RSS feeds, text, audio, and more are all quickly scheduled into a signage presentation that is organized either in full-screen or in multiple screen zones. NNA-5000e digital signage controllers can be added to the IPTV system at any time.

Safety Notifications

With safety alerts, you can force all displays (or groups of displays) to perform a wide variety of emergency notification functions, including:

- Overlaying the currently displayed programming with an on-screen alert graphic, notice, or announcement
- Forcing all displays to a static or full-motion major emergency notification, including audio

This feature is essential for letting patients and staff know when an external event needs attention. Facility television displays are the most efficient way to broadcast a message to everyone in the building.



Patient Engagement & Education

Remar Technologies Group, with a focus on partner-driven innovation, designs custom IPTV systems that deliver entertainment, patient engagement, education, and information through TVs and devices, while simultaneously providing powerful data and analytics.

Our IPTV platform delivers high-quality video and audio services, interactive patient communications, personalized patient education, on-screen notifications, and more.

Patient Engagement & Education

Innovative Technology Solutions

We can provide the exact hardware, software, and technical know-how for all your Patient Experience needs. Our IPTV solutions supply a full suite of robust tools designed for use on LG Smart TVs and set-top boxes.

Improve the Patient Experience on a Wide Range of Devices

Give patients, their families, and visitors more options, enjoyment, and control of their environment during their stay. The functionality of our IPTV systems complement our huge inventory of hospital-grade TVs. Patients are entertained, engaged, and educated, improving experience and outcomes.

Use Patient Education to Empower Those in Your Care

Equip your clinical staff with the ability to assign health education videos and interactive learning to empower patients and their families in their own healthcare. Education videos are delivered directly to any of RTG's television options so patients can learn about their diagnosis, what to expect during their hospital stay, and what to do after discharge.

Unique Experience

We can easily assign informational videos and personalize the patient's experience. This makes it easy for nurses to begin the education process, create assessments, see viewing history, and report results. Custom departmental channel lineups and user interface designs can be leveraged to further enhance the patient experience.

Improve Efficiency & Satisfaction

Hospitals can see an immediate increase in patient satisfaction with our IPTV system. When patients know how to care for themselves, it leads to better health outcomes and lower readmission rates.



Patient Entertainment

More and more, hospitals are recognizing the importance of patient entertainment. By offering the comforts of home through live and on-demand TV and movies, you can put patients and their families at ease—which can have a direct impact on your HCAHPS patient satisfaction scores.

And with RTG, you have access to a variety of hospital TV packages at a price that won't break the bank, including thousands of on-demand movies and shows available through our IPTV system.

Swank Movies

Engage your patients and their families with content that promotes comfort and wellness. Our partnership with Swank Motion Pictures means you can give patients access to the latest release movies—on demand in the comfort of their room.



for Hospitals

Deliver all your patients' favorite channels in HD with a hospital TV package from DIRECTV. Customize your plan with optional upgrades for premium channels, NFL Sunday Ticket, 4K content, and more!



DIRECTV

**Help your patients feel right
at home with in-room patient
entertainment by DIRECTV.**

Put your patients and their loved ones at ease

with the DIRECTV entertainment they love. It's a great way to upgrade your patients' experience—for a price that won't break your budget. Have questions? Contact us and we'll work with you to find the best solution for your hospital.

Patient Benefits

- Access to more than 100 HD channels† and 4K‡ content
- Premium channel upgrades available
- Access to the best in sports programming with NFL SUNDAY TICKET
- An unparalleled entertainment experience for your patient
- Welcome to the next generation of in-room patient entertainment, brought to you by DIRECTV.
- Local Channels Available



†Limited programming available. 4K equipment, minimum programming (SELECT Package or higher), 4K account authorization and professional installation required. Other conditions apply. ©2018 AT&T Intellectual Property. All Rights Reserved. AT&T, Globe logo, DIRECTV, and all other DIRECTV marks contained herein are trademarks of AT&T Intellectual Property and/or AT&T affiliated companies. All other marks are the property of their respective owners.



Hospital-Grade TVs

Whether you are looking for top of the line Interactive TVs, a Smart TV, or a Standard Hospital Grade Television, Remar Technologies Group has you covered.



LG
Life's Good

medTV
powered by PDi

Smart Healthcare TVs



LG: Hospital Grade Pro:Centric SMART TV® with Integrated Pro:Idiom®

Available Sizes: 32"

Key Features

- Designed Specifically for the Healthcare Industry
- UL Hospital Grade Listed
- RoHS Compliant
- California Energy Commission (CEC) Compliant
- Built-in Pillow Speaker Port • Built-in MPI Port
- TV Speaker Disable
- USB Cloning

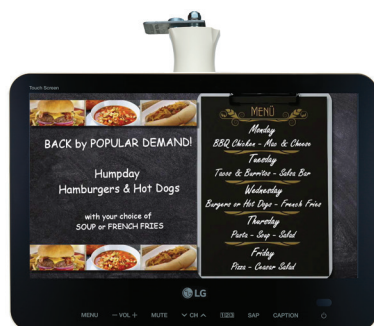


LG: 4K UHD Hospital Grade Pro:Centric SMART TV® with Integrated Pro:Idiom® and b-LAN

Available Sizes: 43", 49", 55", 65"

Key Features

- 4K ULTRA HD Resolution
- Designed Specifically for the Healthcare Industry
- UL Hospital Grade Listed
- RoHS Compliant
- California Energy Commission (CEC) Compliant
- Built-In Pillow Speaker Compatibility
- Built-in MPI Port
- TV Speaker Disable
- USB Cloning



LG: Personal Healthcare Smart Touch Screen TV

Available size: 15"

Key Features

- Intuitive Multi-touch Display
- Perfect Viewing with LG IPS and Instant On
- Pre-loaded Apps (including gaming apps)
- Pro:Centric Information Management Solution
- Pro:Centric Direct Solution
- Pro:Idiom
- USB Cloning

RTG offers a wide range of televisions designed specifically for the healthcare industry to meet any budget. To offer quick delivery of our products, we inventory, warehouse, and ship these products from Tennessee.



Smart Healthcare TVs



medTV powered by PDI

Available Sizes: 24", 32", 43", 55"

Key Features

- Built for healthcare standards
- Easy navigation to games and relaxation (included)
- UL Listed
- Universal Pillow Speaker
- USB Clone Programmable or compatible with RF-HEMiS
- 2 HDMI Inputs
- MPEG4/Pro:Idiom decoding for expanded lineup of HD channels
- Multi-lingual English/French/Spanish Menu and OSD
- 3-year standard warranty included or upgrade to 4-year extended warranty (GVS)



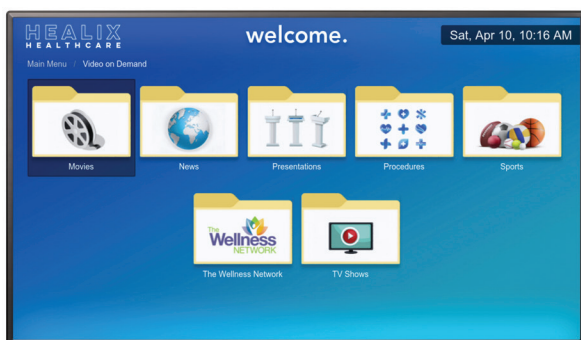
medTV powered by PDI Arm Mounted Bedside TV

Available Sizes: 14", 16", 19"

Key Features:

- UL Listed, low voltage, widescreen HDTV
- Large, easy touch, direct entry channel buttons
- Front facing speakers and headphone jack
- Extended panel life, designed to last more than 7 years when powered on 18+ hrs/day
- Easy USB or RF-HEMiS cloning
- Password protected set-up menus
- Channel aliasing and remapping
- Compatible with PDI swing arms or available as VESA 75 x 75 mm

Non-Smart Healthcare TVs



LG: Hospital Grade Pro:Centric LED

Available Sizes: 24", 28", 32", 43"

Key Features

- Designed Specifically for the Healthcare Industry
- ENERGY STAR® Qualified
- Built-In Pillow Speaker Compatibility
- Remote Management of Television
- California Energy Commission (CEC) Compliant
- LG's Exclusive Pro:Centric Application Platform
- USB Cloning



Commercial TVs

There are places in your facility

where you don't need a specialty hospital grade television, like your waiting rooms and doctor's lounges. That's why RTG offers a full range of LG commercial televisions to meet all your needs.

We are happy to discuss your options and provide you with a quote that fits your unique situation.



LG

Life's Good

Commercial TVs

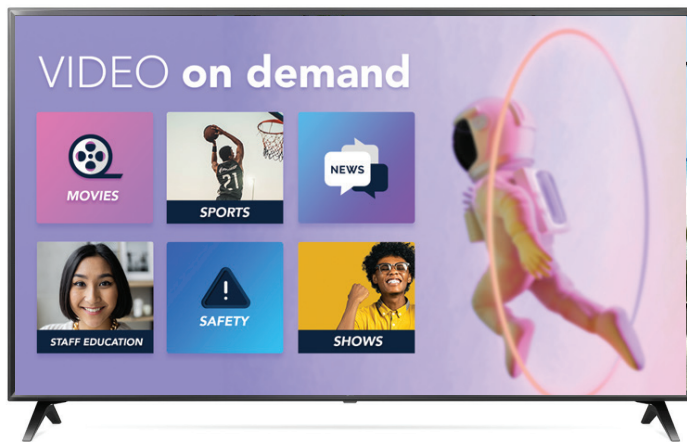


LG Commercial TV

Available Sizes: 32", 43", 49", 55"

Key Features

- Public Display Mode
- Commercial Grade Stand
- External Speaker Out Compatibility (Speaker Sold Separately)
- IR Pass Through and Control
- USB Cloning



LG Commercial Pro:Centric SMART TV®

Available Sizes: 43", 49", 55", 65", 75"

Key Features

- Pro:Centric Hotel Management Solution (Smart, V, Direct)
- Facility Virtual View
- Smart Clock (visualized app-based)
- MPI Protocol
- Pro:Idiom DRM
- USB Cloning



Arms

We offer the full line of mounting systems from both Peerless and Crimson, as well as arms for the PDI products. If you don't see the kind of mount you need for your project, please let us know. We will find just what you are looking for.

Arms



PDI 500 Series Arm

500 Series Swing Arms for Bedside Healthcare TVs and Devices

Key Features

- Reduced back, neck and eye strain
- A broad range of motion
- Stability and security
- Cable free zone
- "No Drift" brakes for stability



PDI 1000 Series Arm

1000 Series Swing Arms for Bedside Healthcare TVs and Devices

Key Features

- Reduced back, neck and eye strain
- A broad range of motion
- Stability and security
- Cable free zone
- Gas Piston Design



PDI 1400 Series Arm

1400 Series Arms for Bedside Healthcare TVs and TV-TABLET Devices

Key Features

- Hassle-Free Cable Replacements
- Reduced back, neck, and eye strain
- A broad range of motion
- Stability and security
- Cable-free zone

Mounts

peerless-AV®
Driving Technology Through Innovation

CRIMSON®
AV MOUNTING SOLUTIONS

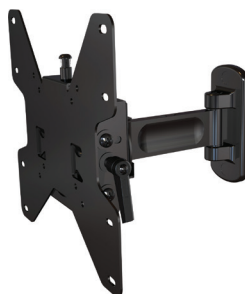


Crimson A30F Pivot Mount

Articulating Mount

Key Features

- VESA compatible up to 100x100mm
- Smooth variable tilt of 15°
- Post-installation leveling without requiring tools
- Snap in place mechanism to lock position when retracted
- Integrated cable management for clean look



Crimson P37F Tilt Mount

Tilt Mount

Key Features

- VESA compatible up to 200mm
- Post installation screen leveling without use of tools
- Integrated cable management for clean look



Crimson T46A Tilt Mount

Tilt Mounts

Key Features

- VESA compatible up to 600x400mm
- Click in place screen placement without use of tools
- Optional securing screws locks release latch for additional security
- Low-profile, holds screen close to wall for a clean look
- Open wall plate allows easy access for wiring
- Lateral shift for perfect placement

Mounts



Peerless PLCM-UNL Universal Ceiling Mount

Ceiling Mounts

Key Features

- Column can be flush to the ceiling all the way to 20' from the ceiling
- Fits 13" – 71" screens
- Portrait and landscape orientation available



Peerless ST650 SmartMount Universal Tilt Wall Mount

Tilt Wall Mount

Key Features

- Adjustable viewing feature – 15° forward tilt & 5° backward tilt with incremental tilt lock in 5° for perfect screen alignment
- Fits 10"-102" screens
- Horizontal and vertical adjustments post installation
- One-touch, continuous tilt for effortless adjustment without the use of tools



Peerless PLA50 Articulating Mount

Articulating Mount

Key Features

- Extend out up to 33" from the wall and fold to within 3" of the wall to save space
- Fits 10"-71" screens
- Cable management systems hide all cords and cable



Peerless SA740 Pivot Mount

Pivot Mounts

Key Features

- Extend out up to 10" and folds flat against the wall to save space
- Fits 10"-60" screens
- Adjustable tilt allows impeccable screen viewing and reduces glare



Peerless SF640 Universal Flat Wall Mount

Flat Mounts

Key Features

- Low profile design
- Fits 10"-102" screens
- Easy-Glide system ensures screen is securely installed

**Custom
Solutions
Available**



Accessories

RTG has the perfect remote control options for you, from a master remote to use to configure and program the TVs to a clean remote, to the Curbell Gen 4 Pillow Speaker. We can make sure your needs are met!

Accessories



Gen 4 Pillow Speakers

Key Features

- Easy to use and Durable
- Large, easy-to-press buttons
- Clear Sound
- Comfortable Shape
- Patient Room Integration
- Propriety design for Infection Control
- Optional Headphone Jack
- Optional Analog Volume Control



Gen4® Pillow Speakers for Pro:Centric TVs

Key Features

The Pro:Centric line of pillow speakers from Curbell was created in close partnership with LG Electronics for facilities who have implemented full LG Pro:Centric system capabilities. It allows users to access, navigate, and control any patient-oriented features, in addition to the standard Gen4 pillow speaker Nurse Call and Room Control capabilities.



LG Installer Remote

Key Features

- Universal Installer Remote Control
- Installer Menu Options
- Programming Capabilities



LG Patient Remote

Key Features

- Universal Remote Control
- Multi Bed Feature
- Ready to Use

Clean Remotes



CR1

TV Only – Includes Standard Features
“The Original Clean Remote”

Key Features

- Preset For LG, Samsung & RCA* TV's
- One-touch No Code Setup for All Other TV Brands



CR3BCB

TV Only OR TV & In-Room Cable Box
Big Button- Microtexture Enhanced Feel

Key Features

- Preset For LG, Samsung & RCA* TV's
- One-touch No Code Setup for All Other TV Brands



CR2BB

TV Only- Big Button

Key Features

- Preset For LG, Samsung & RCA* TV's
- One-touch No Code Setup for All Other TV Brands



CR4 & CR4-B

Direct Replacement for
Original LG, Samsung & RCA*
Hospitality Remotes
Also Works Pro-centric & Lynk
Reach Servers

Key Features

- Portal, Home, Source and Navigation Keys



CR3BCB-H

Big Button Healthcare
Multi-Bed Capable
For LG, Samsung, RCA,
PDI, Philips & Zenith

Key Features

- Allows Multiple TVs to Operate in the Same Room Without Interference



CR2M

Sonifi, LodgeNet &
OnCommand
Replacement Remote

Key Features

- Includes Pay-Per View Options



CRKC1

LG TV Only Healthcare
Keychain Remote

Key Features

- Clean Remote Replacement for LG Keychain Remote 124-213-10, AKB73055503, AKB73075301 and 1919290191

COVID Care Technology



Telehealth Cart for Teleray Video Call System

Available sizes: 15.6", 18.5"

Key Features

- "No-Fuss" solution, designed to meet healthcare needs during COVID-19
- UL-Listed hospital-grade touchscreen device
- Senior residents or patients can easily video chat with healthcare providers, friends and family
- Built for healthcare disinfection standards and infection controls. Includes a basket for disinfection wipes.
- Android™-based OS
- 48" tall mobile cart
- Adjustable arm height and TV tilt
- 4" Smooth gliding casters, rear locking
- Easy to move on carpet or hard floors
- Small footprint wheel base 19" x 22"
- Integrated ENET cable or use WIFI
- AC powered, no batteries
- Easy to clean and disinfect
- Few parts to assemble



Thermal Camera Temperature Screening Kiosk

Non-Contact IR Scanner

NOTE: Temperature screenings are designed to detect fever, yet this device does not provide a medical diagnosis. Follow manufacturer specifications for proper operation.

Key Features

- 8" LED Screen
- Thermal Imaging Camera for non-contact human body temperature screening as a first line of defense to identify the presence of a fever as a symptom of COVID-19 or other contagious illnesses
- Fast, accurate scans
- Temperature accuracy +/-0.9deg Fahrenheit
- Mask recognition technology is ideal for healthcare workers or persons entering a building wearing a face covering
- Backend facial recognition software allows you to upload photo database of staff and record time and temperature
- Outputs easily tie into door access controls
- Android-based™ OS
- 2GB of memory
- Angle of face recognition within 30deg L/R and up/down
- Few parts to assemble

Accessories

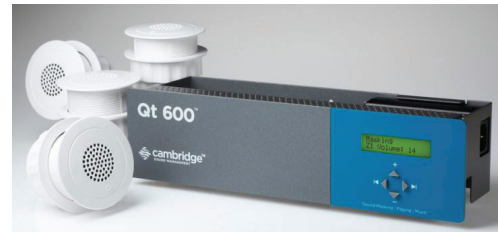


ScreenBeam 1100 Wireless Display Receiver

Wireless Display Receiver

Key Features

- Native wireless screen mirroring means no apps or wires
- Present from anywhere in the room
- Share any form of content—videos, images, slides, etc.
- Designed for enterprise applications and dense wireless environments
- Extended desktop maintains use of device for other actions
- 4K output supports any display natively
- Collaborate wirelessly using touch displays and Windows Ink across Office 365 apps
- Combines local Wi-Fi connectivity with Miracast and dual-network infrastructure connectivity
- Connects to displays, projectors, switchers, and Skype® Room Systems via HDMI and USB



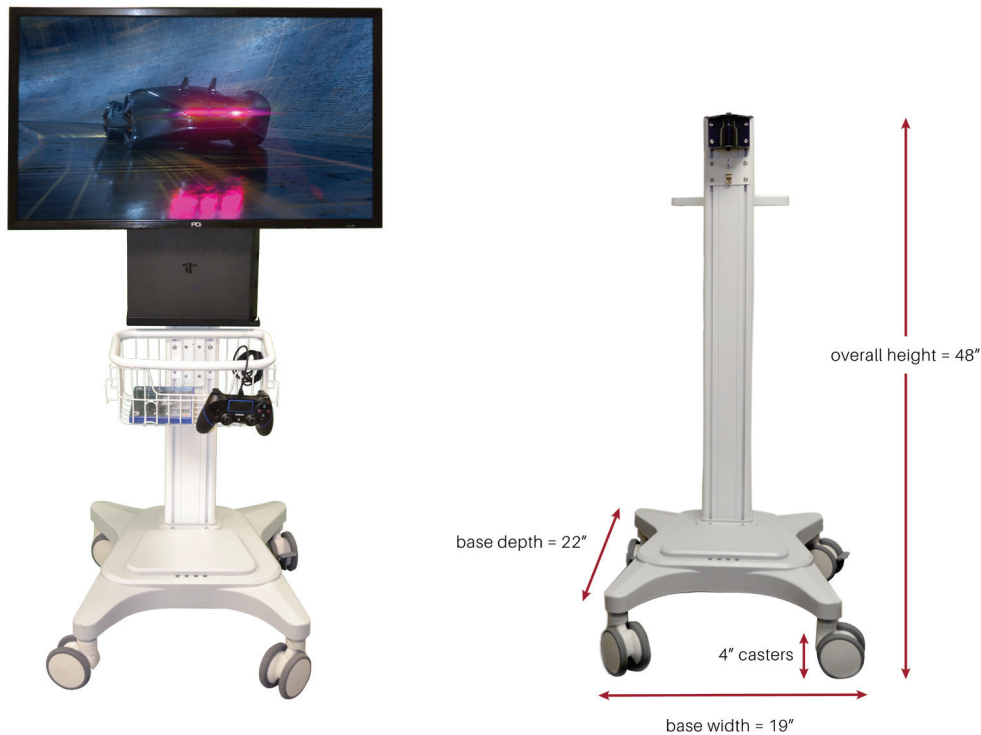
Cambridge Qt 600

Sound Masking

Key Features

- Key Features
- Maximum coverage area: 72,000 ft² / 6689 m²
- Maximum emitters: 720
- Zones: 6
- Dimensions: 13.5" x 3.5" x 3.8" (34.3 cm x 8.9 cm x 9.7 cm)
- Weight: 3 lbs (1.4kg)
- Mounting style: Wall or equipment rack
- Password: Yes (two levels)
- Panel lock: Yes
- Internal clock: Yes
- Audio inputs: 2 (fixed terminal block)
- Module control:
 - Front panel
 - Local area network
 - Software (TCP/IP web browser-based)
- Volume control: By zone and audio source
- Day/night levels: Yes (by zone)
- Day/night ramping: Yes (by zone)
- System monitoring: System electronics
- Email error notification: Yes
- Safety alarm integration: Yes

Accessories



Games-On-the-GO™ Portable Patient Gamer System

PDI-GO24, Gamer Cart with 24" Hospital TV Display

PDI-GO32, Gamer Cart with 32" Hospital TV Display

Key Features

Unleash Your Patient's Inner Gamer

The GO-GO™ Gamer Cart by PDI brings healthcare facilities a safe, flexible solution to deliver gaming entertainment to patients and visitors too. Motivates patient interaction and improves the patient experience.

At 48" tall, built with a 24" or 32" hospital TV display with articulating mount, the GO-GO Gamer Cart quickly accommodates patients in beds or clinic chairs for any comfortable viewing angle. Patients enjoy hours of interactive fun play on the integrated Sony PlayStation®4.

Built for Rugged Healthcare Needs

The GO-GO Gamer Cart upholds PDI's high standards for safety, cost-effectiveness and functionality for healthcare spaces. UL-Listed hospital-grade TV display is built by PDI. The 4" smooth gliding caster wheels make it easy to move on carpet or hard flooring and lock in place.

Includes secured Sony Play Station®4 and 2 controllers, pre-installed games, 1 T memory storage, plus sleek internal cable management. Power cord wrap is also included.

Compact design makes for easy storage.

Minimal assembly required, just attach the TV.



Digital Headends

RTG's professional staff is committed to delivering patient-focused, comprehensive system solutions.

We offer the highest level of service

and the latest technology to all our customers in the healthcare industry. Each RTG modular digital headend is designed with the highest quality to bring your facility the advantages of high-definition DSS programming. RTG's digital headend solution is custom engineered, tested, and shipped fully assembled to make installation quick and easy. RTG's digital headends provide more programming options than cable, while delivering cost savings and better- quality entertainment.

DSS Digital Headend System Features & Benefits

- All components are rack-mounted at the factory and shipped ready to install.
- Configurable on-screen program guide
- Remote management and configuration
- Frequency agile modulators for easy changes to channel lineups
- Supports multiple chassis configurations for customized configurations
- Rack dimensions 72" H x 19" L x 14" w



Digital Signage & Monitors

Help your patients navigate your facility with Digital Signage. It is also a great communication tool for your facility.

- These monitors are able to help you keep your patients, their family, and visitors informed and up-to-date with the latest news.
- Digital signage is great for wayfinding; your facility runs smoother when everyone knows where to go and can get there on time.
- In case there is an emergency, alert notices could be broadcast across the signage.
- Special hospital messaging can also be incorporated.

Digital Signage & Monitors



LG SE3KD Series

Available Sizes: 32", 43", 49", 55"

Key Features

- Brightness(Typ.) : 350 cd/m²
- Bezel : Top/Left/Right 13.0 mm (Bottom 18.0 mm)
- Depth : 55.5 mm
- Orientation : Landscape & Portrait mode
- Interface : HDMI, DVI, RGB, RJ45, IR, RS232C, USB
- Speaker : Built-in

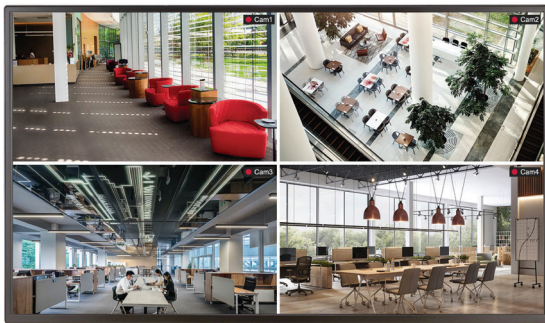


UltraWide QHD Monitor Screen

The UltraWide QHD monitor screen (3440 x 1440 resolution, 21:9 aspect ratio) is great for work. It allows you to have multiple items open on your screen and visible all at once.

Key Features

- LED monitor
- 34"
- 3440 x 1440 WQHD @ 75 Hz
- IPS
- 300 cd/m²
- 1000:1
- HDR10
- 5 ms
- 2xHDMI
- DisplayPort
- speakers

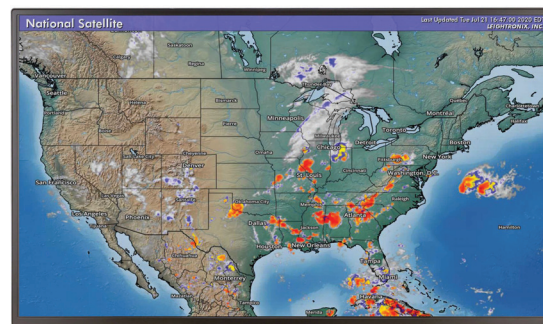


LG: Smart Platform with a Powerful Embedded System-On-Chip – SM5KC

Available Sizes: 32", 43", 49", 55", 65"

Key Features

- Brightness : 400 cd/m²
- Bezel : Top/Left/Right 11.9 mm (Bottom 18.0 mm)
- Depth : 38.6 mm
- Interface : HDMI, DVI, DP, RGB, RJ45, IR, RS232C, SD Card, USB
- Built-in Speaker : 10W + 10W



LG UH5C-b

Available Sizes: 32", 43", 49", 55"

Key Features

- Brightness(Typ.) : 450 cd/m²
- Bezel : 11.9 mm (T/R/L), 18 mm (B)
- Depth : 54 mm
- Interface : HDMI(3)/ DP/ DVI-D/ USB 3.0/ RS232C/ RJ45/ Audio/ IR
- Built-in Speaker : 10W + 10W



Wayfinding

It is no secret that hospitals can be a challenge to navigate.

Interactive digital wayfinding signage is an easy and effective way to help your patients, their family, and visitors find exactly where they need to be and how to get there.

These beautiful touch screen signs will improve the stay for patients and their families, as well as visually enhancing the space.

They are available in a variety of sizes with various features.

Wayfinding



Outdoor Smart City Kiosks with 49" or 55" Xtreme™ High Bright Outdoor Display

Screen Sizes: 49", 55"

Replace static signage with Peerless-AV's award-winning Smart City Kiosk for greater public engagement and seamless updates of digital content whenever, wherever. With a focus on functionality and aesthetics, the Smart City Kiosk is designed to be modern, approachable, practical, and endure the rigors of everyday use. Installation is easy without the need for cranes or forklifts, and the locking rear door offers quick access to the display for maintenance.

Key Features

- Includes Peerless-AV® 49" (XHB492) or 55" (XHB552) Xtreme™ High Bright Outdoor Display to offer maximum flexibility
- Elegant, minimalistic design covers, protects and ventilates display and equipment
- No additional layer of glass needed between display and enclosure, reducing glare
- Wind tested up to 140 mph
- Easily add-on additional technology components for enhanced functionality, such as IR touch overlays, cameras, routers, antennas and more



Portrait Kiosk

Fits most 49", 50" or 55" displays less than 4.00" (101mm) deep

Experience the elegance of Peerless-AV's new indoor Portrait Kiosk, designed to support the latest LED displays and touchscreen panels up to 4" deep. With a flat base that can be free standing or bolted to the ground, the kiosk allows for electric and data cable access, making it easy to install and maintain. Plus, the kiosk includes two whisper-quiet, thermostat-controlled exhaust fans to ensure the display and internal components are kept at an optimal temperature.

Key Features

- Designed with American steel, that provides stability, strength and corrosion resistance for any indoor environment
- Six outlet, UL- and cUL-approved surge suppressor with 6' cord to protect voltage-sensitive components from damaging power surges
- Internal micro-adjustments allow for quick positioning of display within the kiosk window for flush alignment
- Secured doors allow convenient access to the display, media player and other internal components for easy installation and maintenance
- High-performance, premium powder coat finish protects the unit and extends the product lifespan for years
- Stand-alone or fully integrated with display, audio components, media player and input' components
- A wide range of custom aesthetic options also available; options include custom color finishes, vinyl logos, wraps, etc.

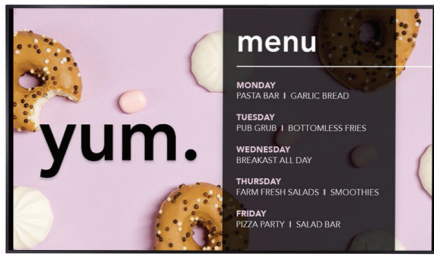


Video Walls

Raise engagement and offer maximum immersion with video walls.

Video Walls have been designed to raise engagement in large areas and offer maximum immersion. These walls can be an escape for your patients, their family, and visitors to your facility. With a clear view from all angles and uniform brightness, it would be easy to get lost in the beauty.

Video Walls



LG: Ultra HD Resolution Large Screen – UH5C

Available Sizes: 75" 86"

Key Features

- Brightness(Typ.) : 500 cd/m²
- Bezel : 14.7mm Even Bezel
- Depth : 60.6mm / without logo, handle
- Interface : DP / HDMI / DVI / RS232C / RJ45 / Pixel Sensor / SD Card / USB



LG: Super Narrow Bezel Video Wall 55LV35A

Available Sizes: 55"

Key Features

- Super Narrow Bezel
- 3.5mm
- Lighter & Thinner Cabinet
- Weight 23kg, Depth 88.5mm
- Higher Brightness Uniformity 80%
- 24/7 Operation



LG SVM5F Series

Key Features

- Brightness(Typ.) : 500 cd/m²
- Bezel : 0.44 mm (Even)
- Depth : 86.5 mm
- Surface Treatment: Haze 28%
- Interface : HDMI(2)/ DP/ DVI-D/ USB 2.0/ RS232C/ RJ45/ Audio/ IR
- Smart Calibration



Customer Service is RTG's Number One Priority

Step 1: Site Consultation

Whether it be for a simple TV installation or a complete IPTV interactive television solution with HD upgrade, RTG wants to fully and clearly understand your goals and what is needed for your project.

We will work with your facilities department to assess everything from the existing infrastructure to expansion capabilities that will enhance both your facility and your patients' experience.

Once the site assessment is complete, we will provide documentation of the assessment with recommendations and a proposal to move forward with your upgrade and new HDTV service.

Step 2: Installation

RTG performs installation services all over the country.

RTG has worked with healthcare facilities all across the country, large and small, on installations that range from one TV to a full replacement of all the TVs in the facility.

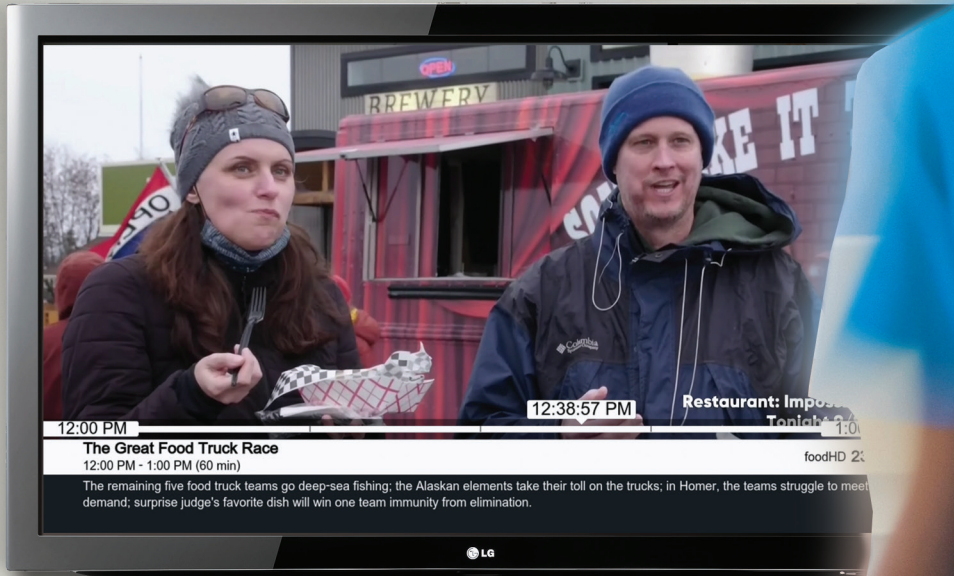
Our team is trained at installations in the hospital environment, working with staff to ensure as little disruption and down time as possible, and are able to troubleshoot any problems that may arise in the process.



Step 3: Service

RTG offers customized system maintenance & service contracts

The RTG team will work with you to customize a system maintenance and service contract specifically for your facility. Each hospital has unique needs and we want to make sure we address those needs. To learn more about system maintenance and service contract, contact us.



Ordering Options

RTG products and parts may be ordered Monday - Friday, 8:00 a.m. through 5:00 p.m. CST. You may also contact RTG's Sales Representatives via RTG's website 24 hours a day, seven days a week. www.RemarTG.com

Via Phone [615-965-4410](tel:615-965-4410)

Call us to place an order or speak with your regional Sales Representative.

Via Email info@RemarTG.com

Send an email to RTG for Service, Tracking Shipments, or Returns and obtain all the information you need.

Via Website www.RemarTG.com

View our products, request a quote or consultation.

[illegible]





RemarTG.com

© Remar Technologies Group, LLC | 1420-D Toshiba Dr., Suite 600 | Lebanon, TN 37087 | 615-965-4410 | info@RemarTG.com